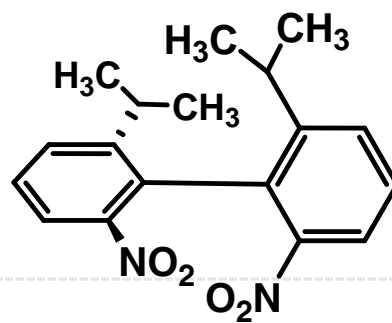
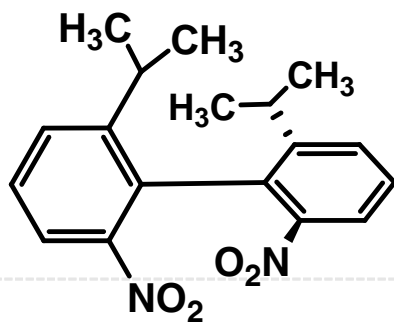
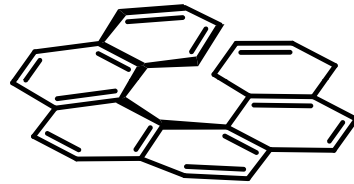
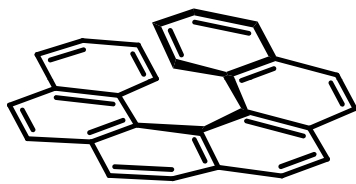
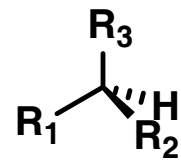
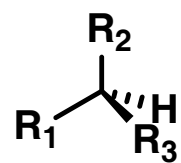
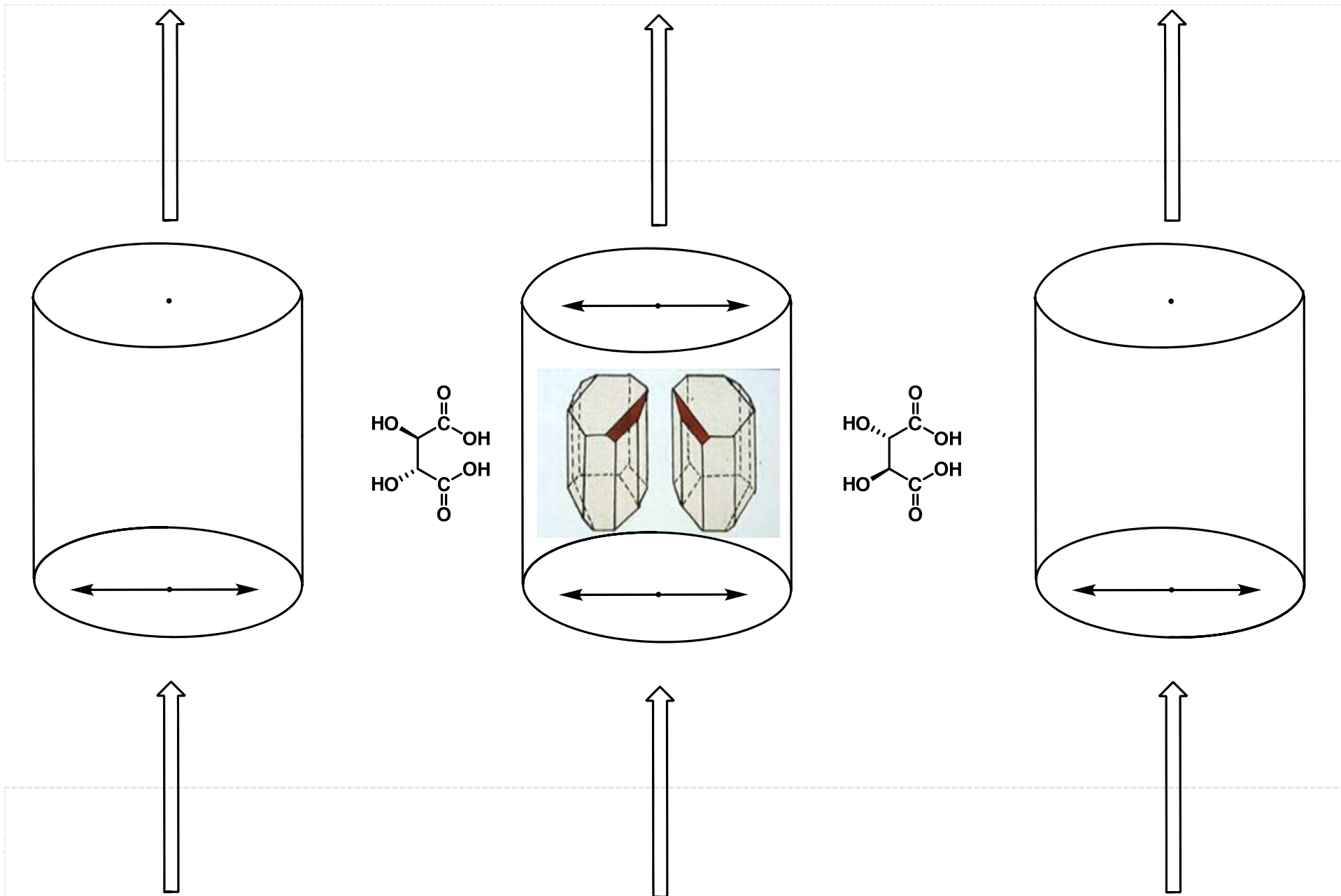


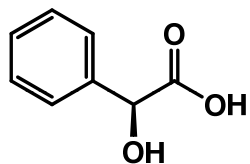
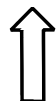
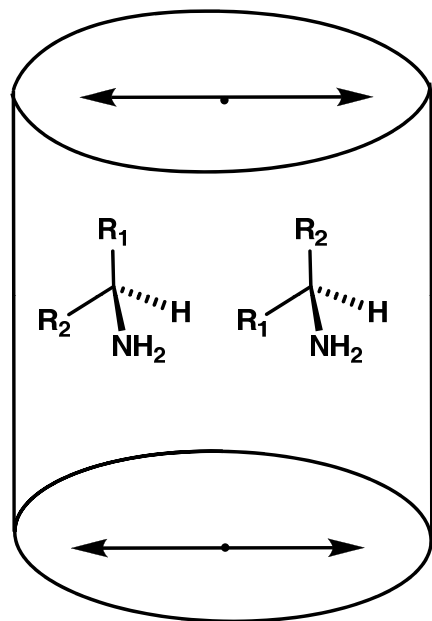
**Light Polarization (31-1)**



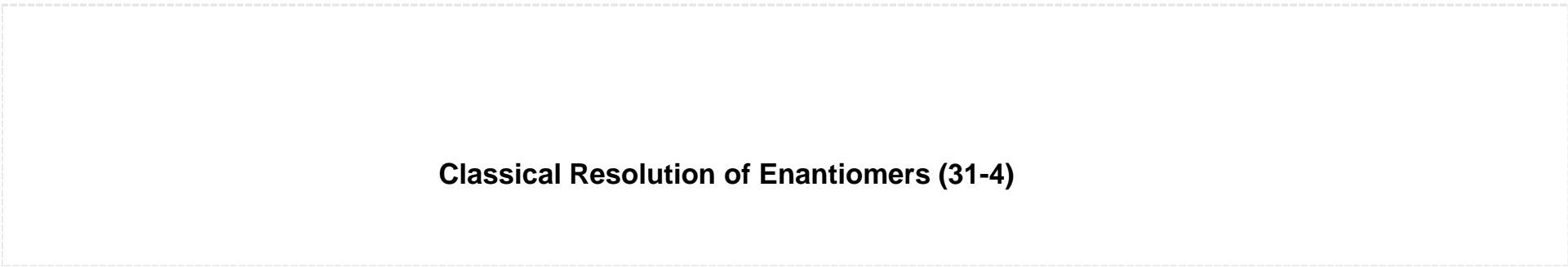
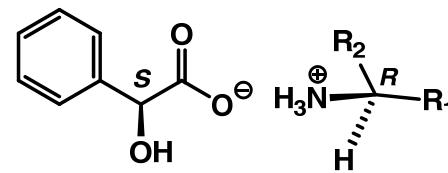
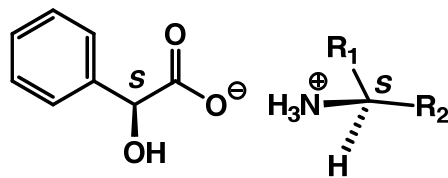
Chiral Molecules Lacking Stereocenters (31-2)

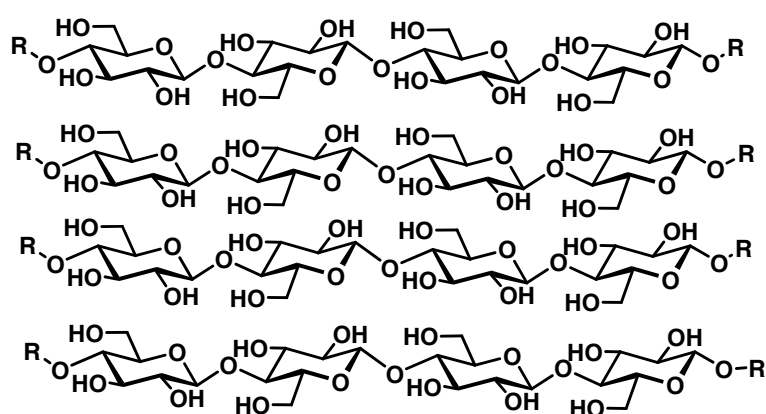
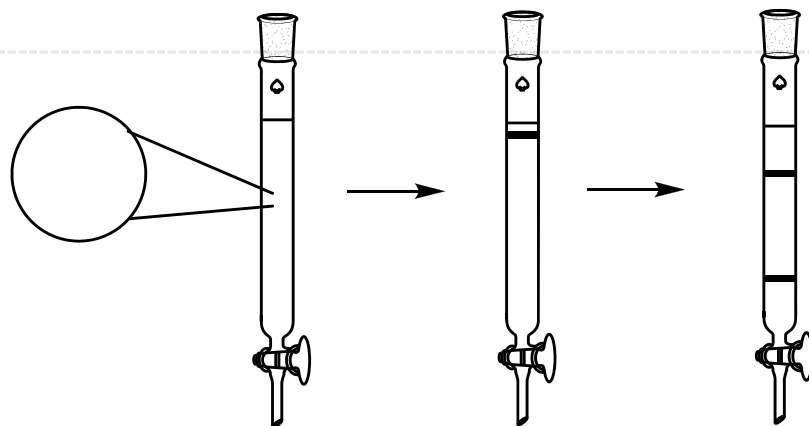


**Enantioresolution and Pasteur's Crystals (31-3)**

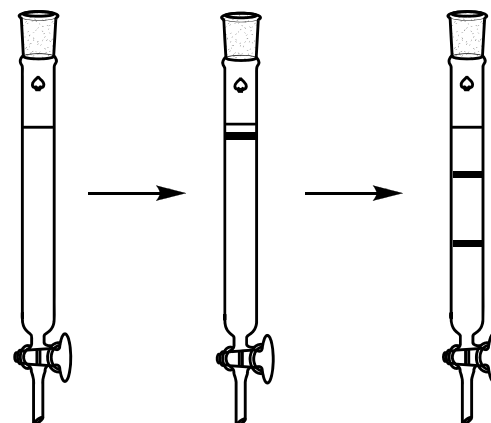


**(S)-mandelic acid**

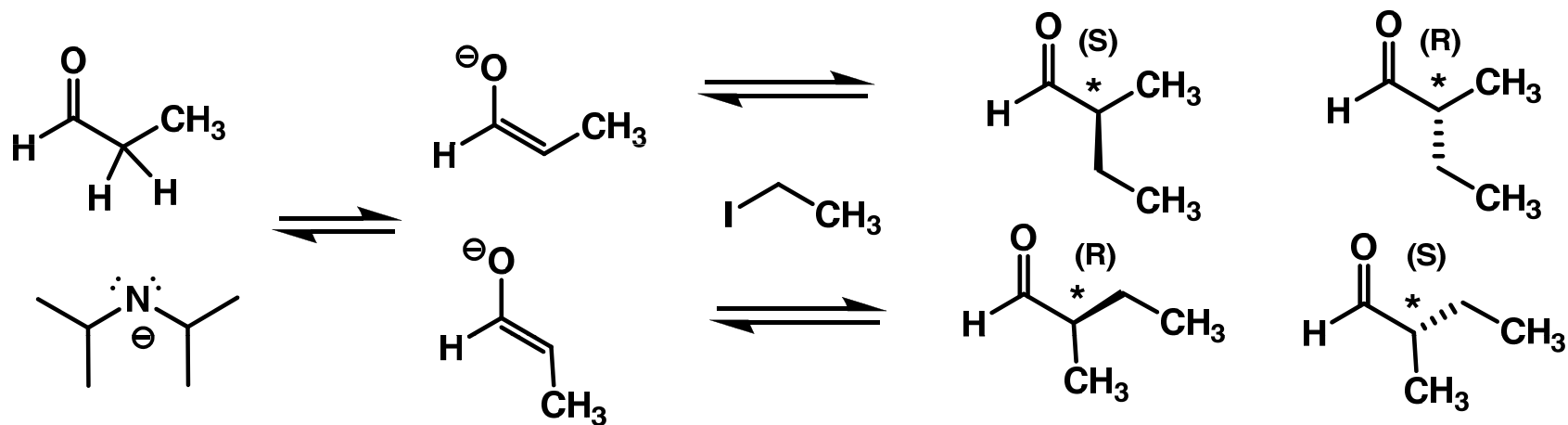




cellulose (D-glucose polymer)

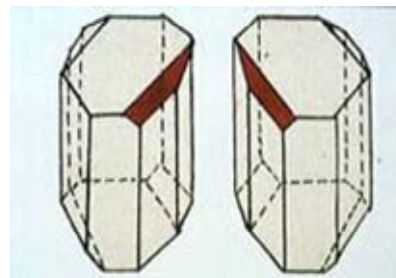
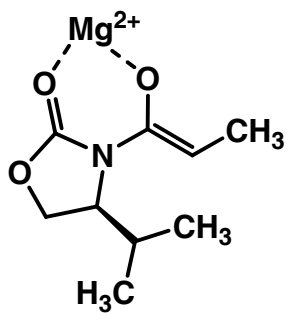
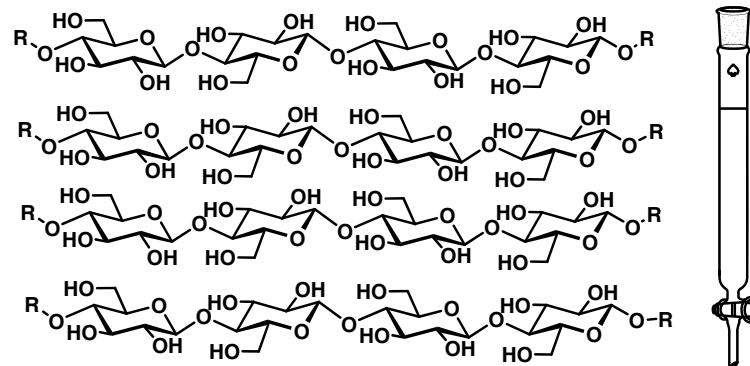
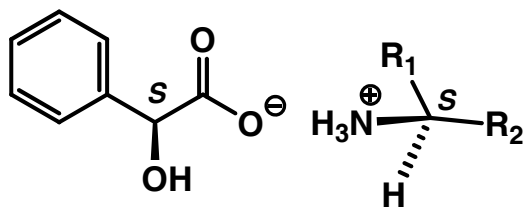


Chiral Chromatography (31-5)

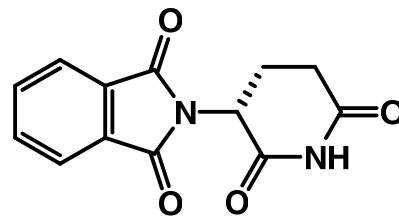
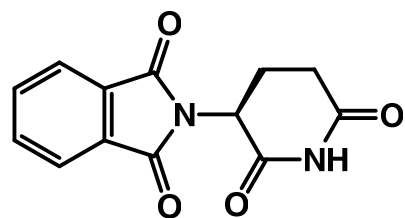


**Stereoselective Resolution of Enantiomers (31-6)**





Origins of Chirality (31-8)



**Thalidomide (31-9)**